

CROSS SECTIONAL MEDIAN LENGTH OF STAY (CMLOS):

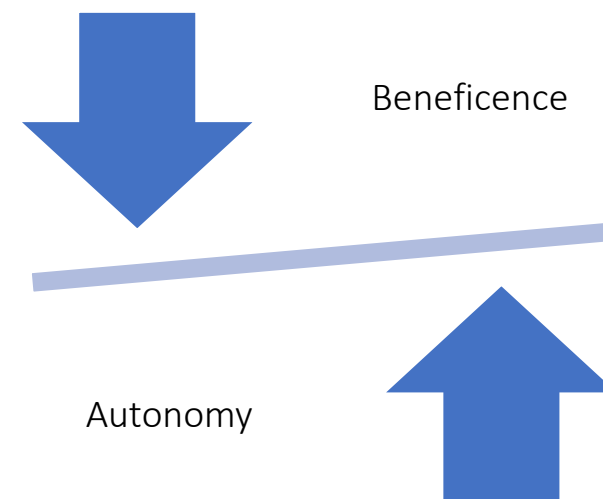
Krishna Pillai, Mason Clinic, Waitematā DHB

“There are two hazards facing a patient admitted to a secure forensic hospital. The first is detention at an inappropriately high level of therapeutic security, with restrictions and intrusions on freedom, privacy and choice out of proportion to what is needed for safe treatment. The second is an inappropriately long length of stay.”

Length of Stay (responsive)

- Patients

- Families



Length of Stay: managed care pathways (accessible).

- Administrators
- Commissioners

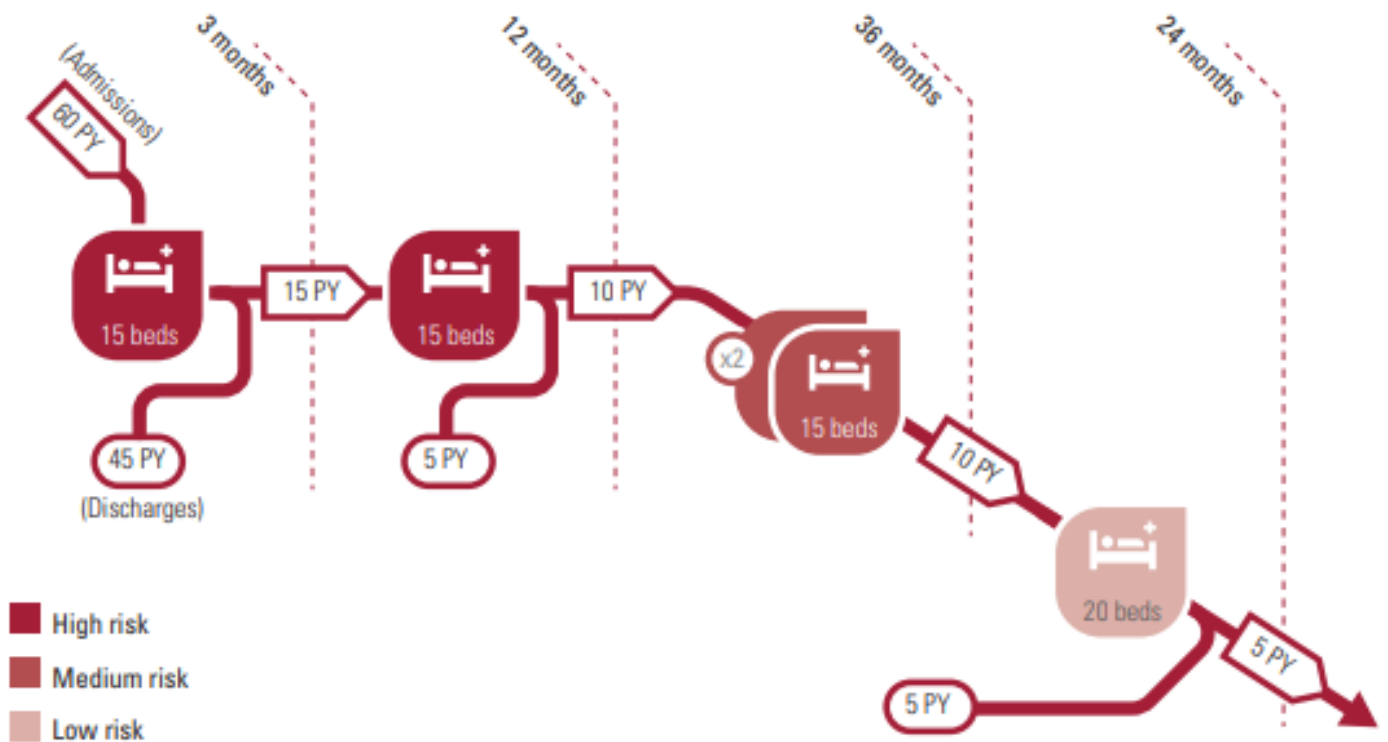
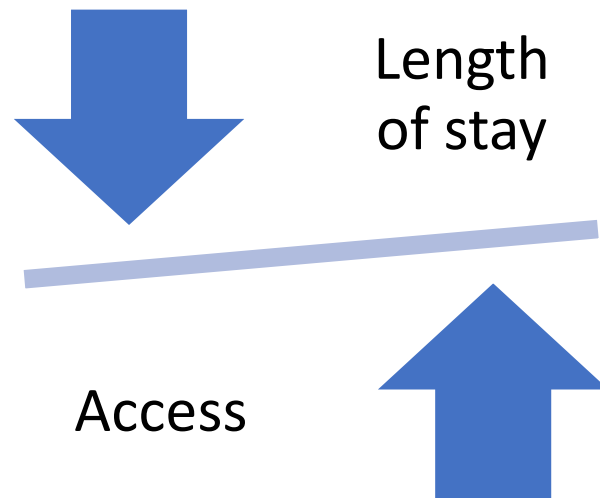


FIG 1 Stratified therapeutic security, the most common model of therapeutic security in secure forensic hospitals. PY, per year.

Length of Stay : a final common pathway

- Clinical variables
 - Case mix
 - Cognitive impairment
- Systemic variables
 - Legal systems
 - Health care systems
- Demographic variables
 - Age of offending
 - ethnicity

Length of Stay: Cross Sectional and Median

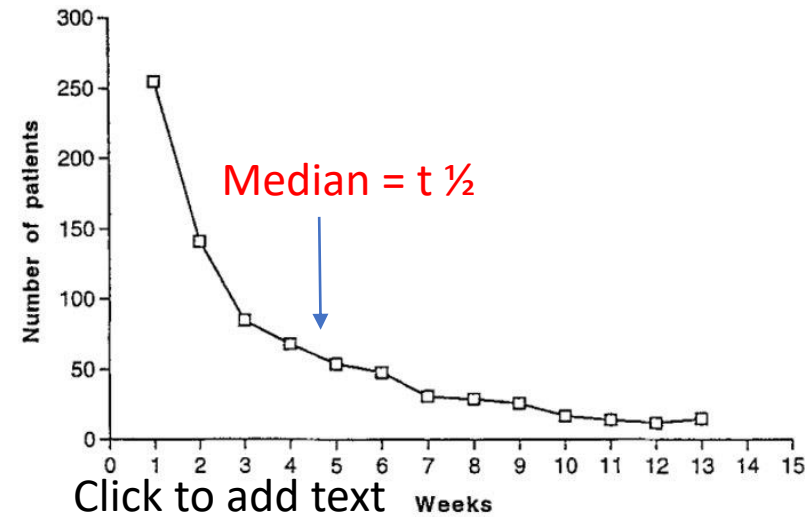
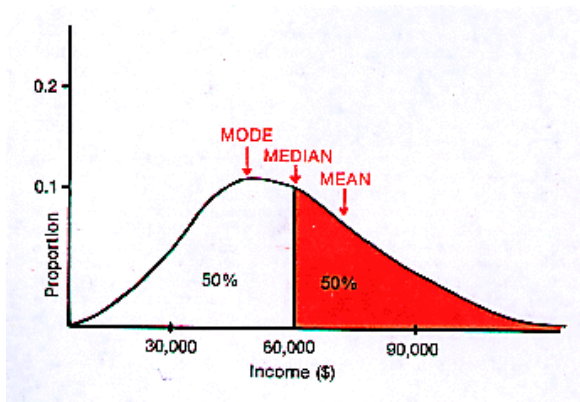


Fig. 1. Distribution of length of stay of admissions to a psychiatric unit.

Cross sectional allows instantaneous analysis rather than waiting for a whole cohort.

Episode of stay definition

- An episode of stay
 - T11, T12, T13 bednights in Forensic DHB teams with 14 days or less between bednights
 - End of stay (community reintegration) is defined as 4 leaves day out of 7 for at least 2 consecutive weeks.
- Note: Whanganui DHB is placed with Capital Coast DHB data and Ngā Ringa Awhina (Hauora Waikato) is placed with Waikato DHB.
- Team target population: Adult or Mixed (2 and 6). This excluded child and youth forensic unit.

Legal status groupings:

Special and restricted ("True" forensic orders)	S24(2)(a) CPMIPA and S55 MHA
Sentenced/In custody (otherwise in prison)	S34(1)(a)(i) CPMIPA, S45/- MHA, S46 MHA
Medico-legal (court ordered assessments and pending trial)	S23, 38(2)(c), 35(2)(b), 23 (2)(b), 44(1) CPMIPA
Intellectual Disability	S24(2)(b), 34(1)(a)(ii) CPMIPA
Others	??



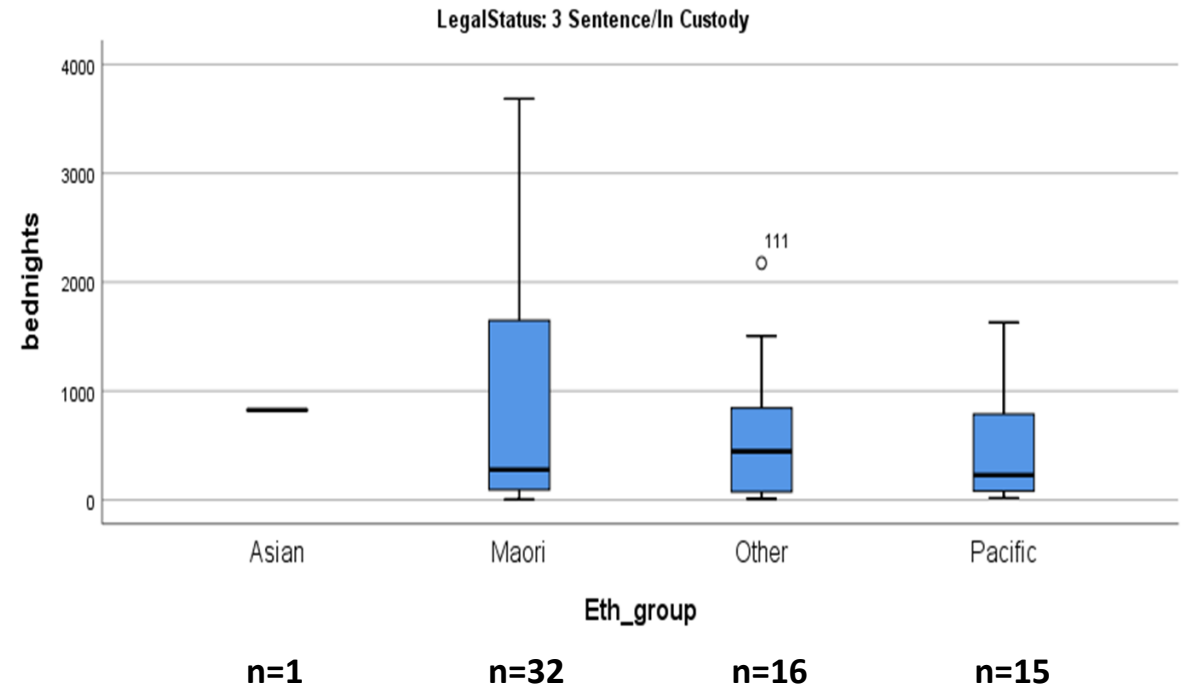
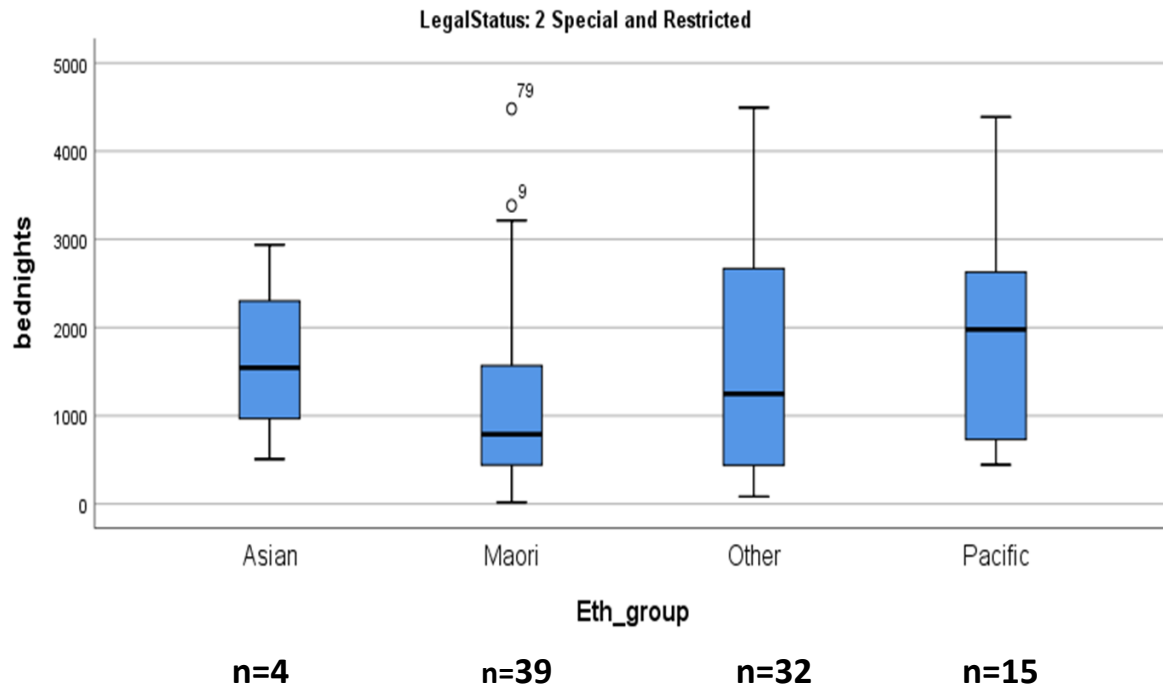
Assumptions made about legal status and LOS

- All tāngata whai ora can be coded under one or multiple legal statuses for their entire length of stay
- The highest legal grouping in the hierarchy is chosen as the legal status group. This applies for an entire episode of care regardless of if the legal status start date is reached or not in the cross-sectional LOS calculation.
- The legal status chosen for the tāngata whai ora follow the hierarchy below
 1. Intellectual disability (is excluded from the analysis)
 2. Special and Restricted
 3. Sentence/In Custody
 4. Medico legal status (limited analysis has been done for this group)
 5. Other

Number of episodes, open on 1 Nov 2020, by DHB and legal status

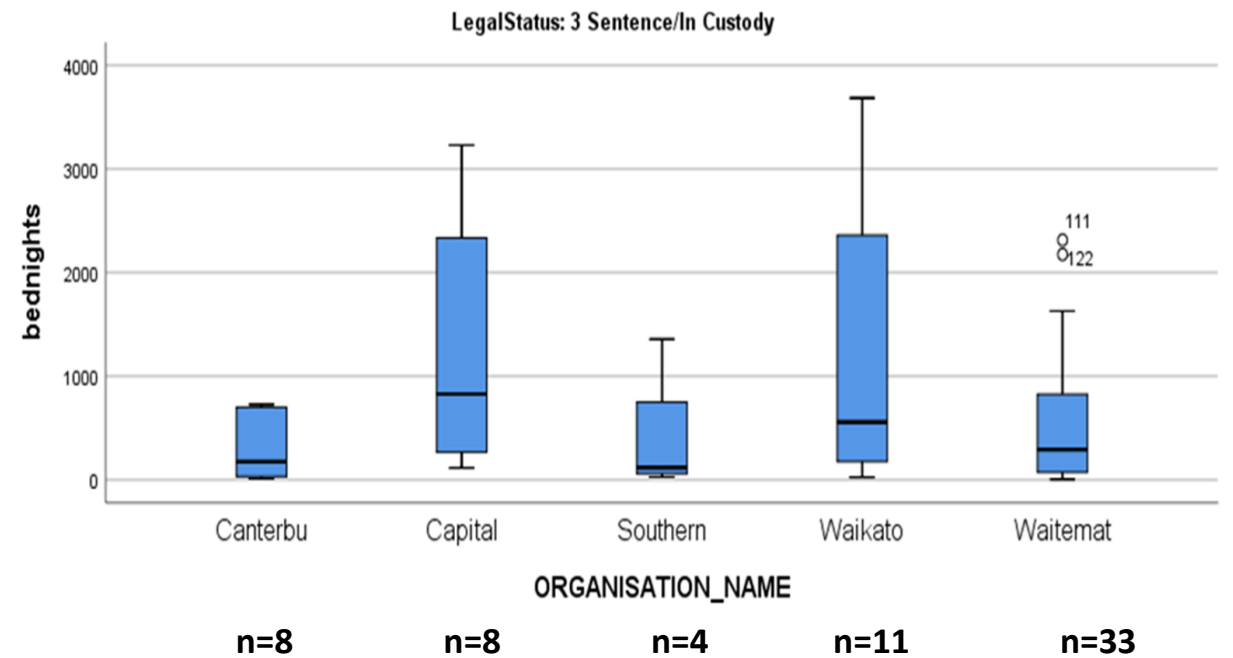
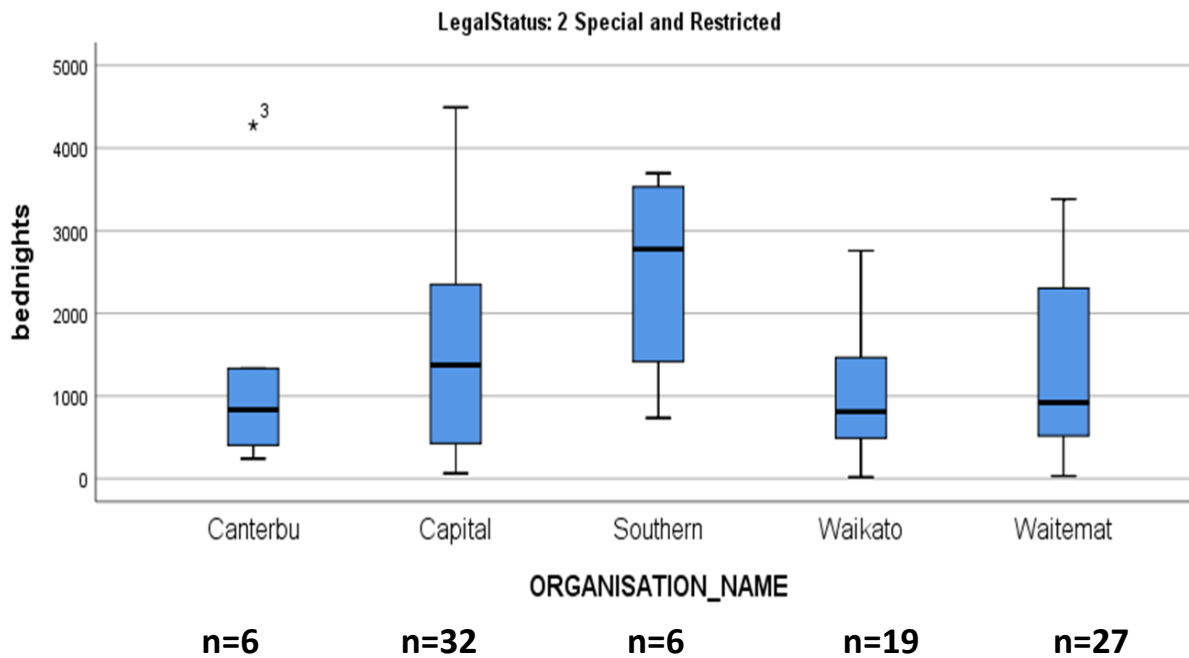
	2 Special and Restricted	3 Sentence/In Custody	4 Medico legal status	5 Other	Total
Canterbury DHB	6	8	2	3	19
Capital and Coast DHB	32	8	4	17	61
Southern DHB	6	4		1	11
Waikato DHB	19	11	2	20	52
Waitematā DHB	27	33	6	10	76
Total	90	64	14	51	219

Boxplot of Cross Sectional length of stay as at 1 November 2020 by ethnicity and Legal Status



Source: Ministry of Health, PRIMHD extract dated 23 June 2021

Boxplot of Cross Sectional length of stay as at 1 November 2020 by DHB and Legal Status



Source: Ministry of Health, PRIMHD extract dated 23 June 2021

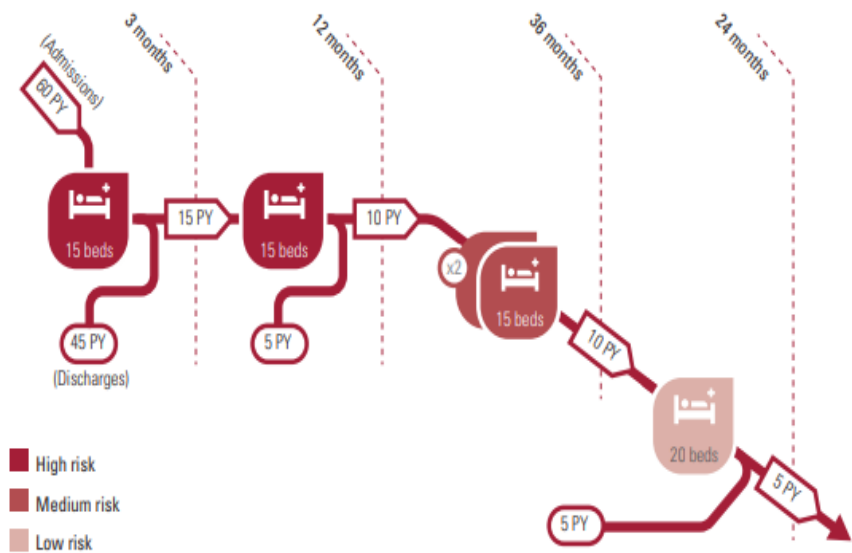
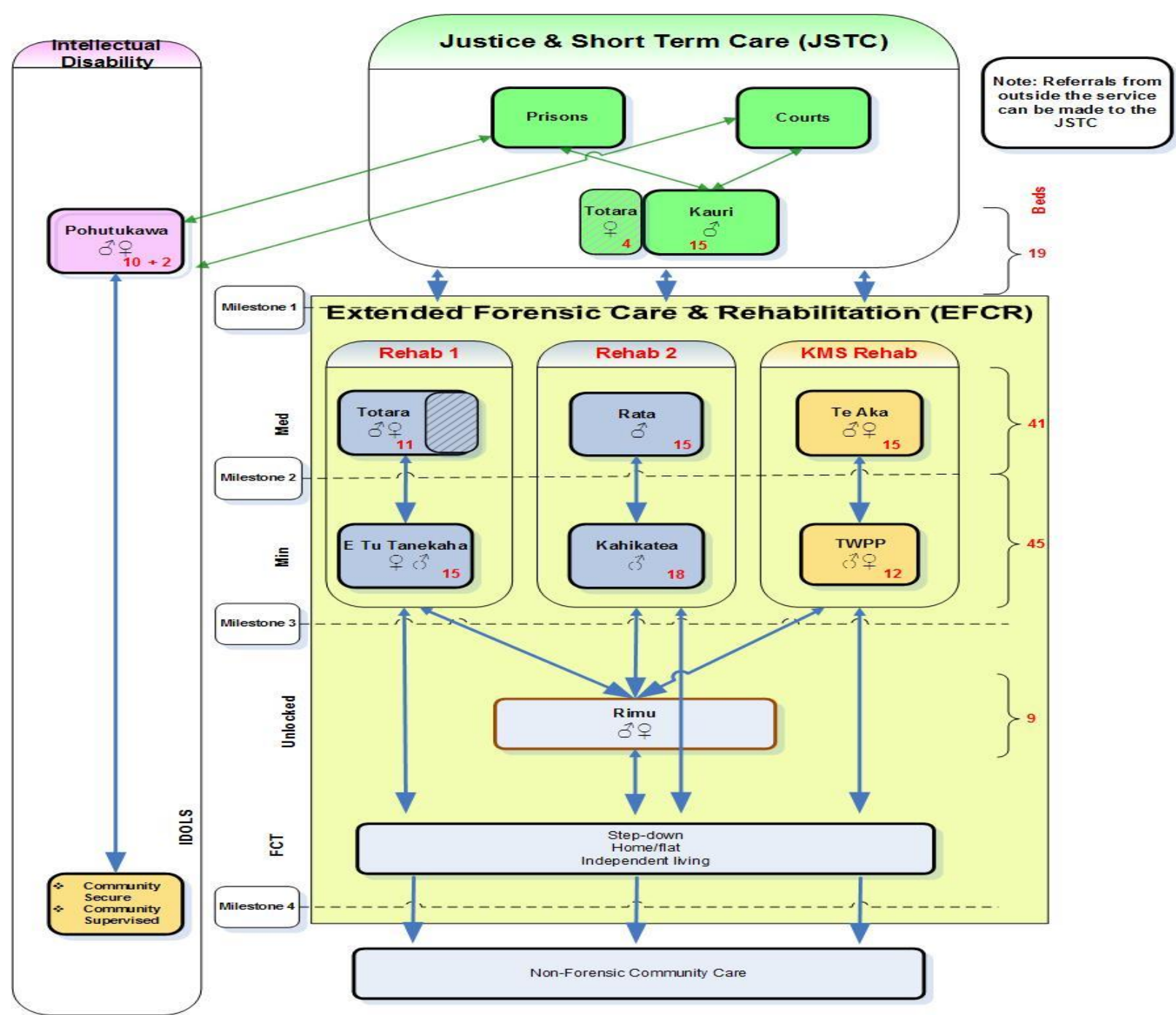
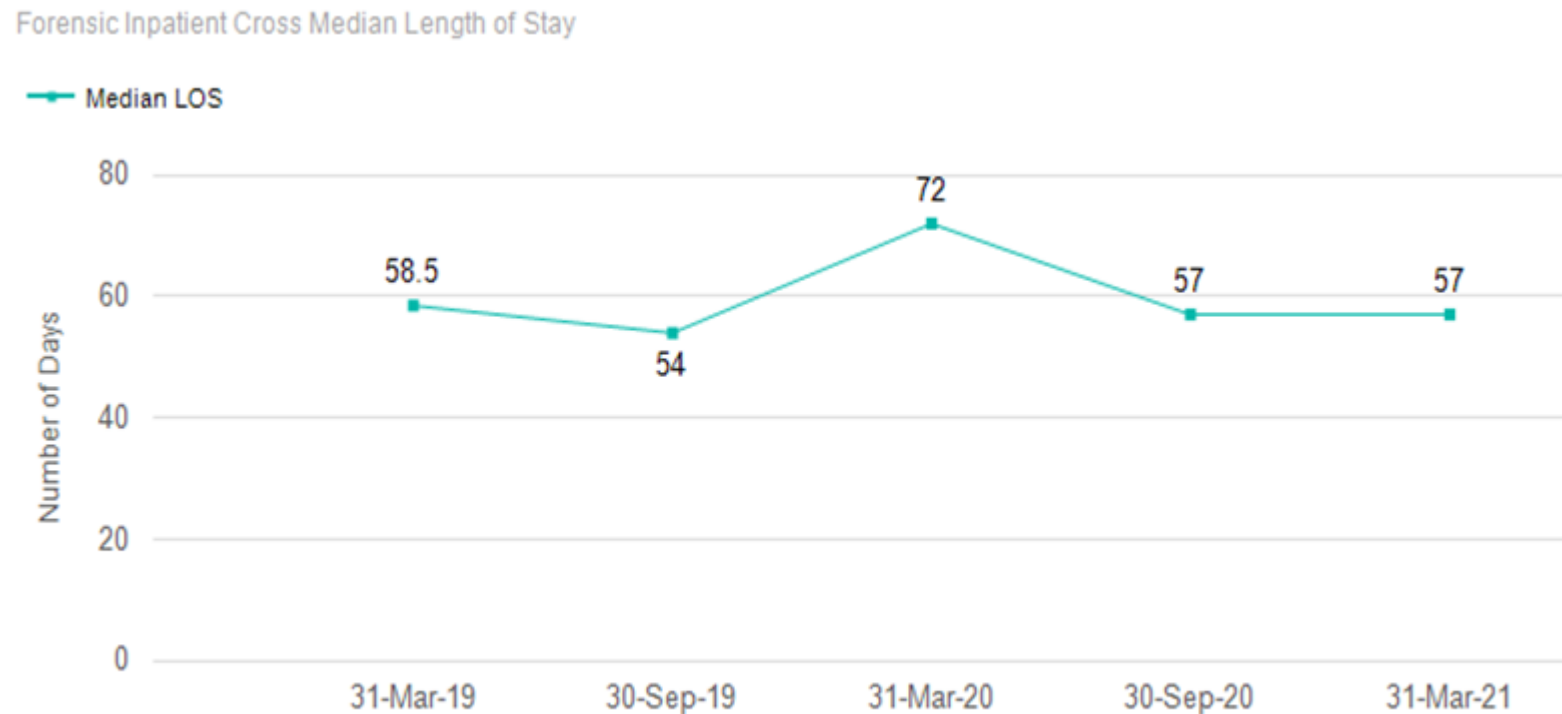


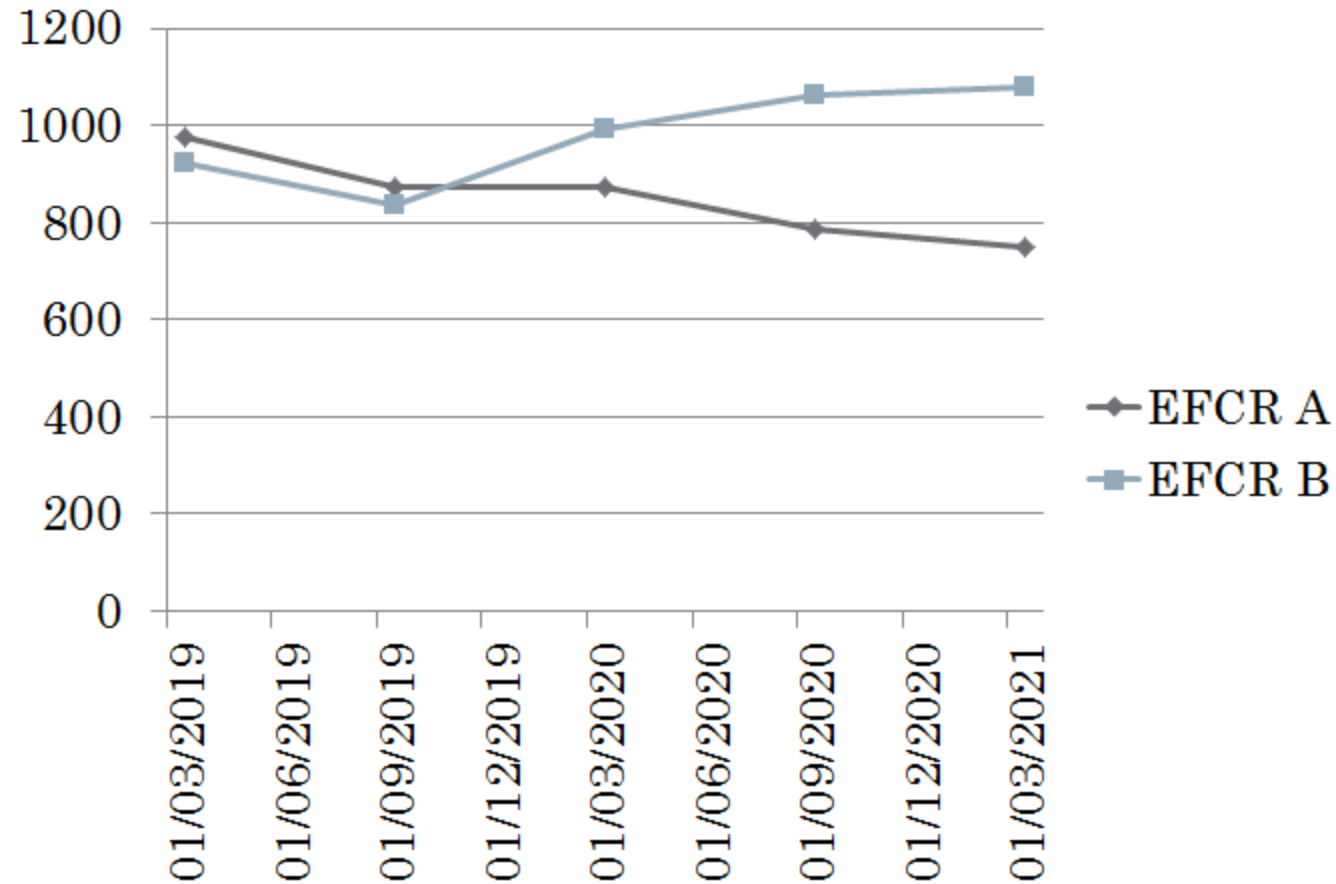
FIG 1 Stratified therapeutic security, the most common model of therapeutic security in secure forensic hospitals. PY, per year.



Cross-sectional median length of stay in days: STC at Mason Clinic (<90 days target)



Cross-sectional median length of stay in days: Extended Forensic Care and Rehabilitation Mason Clinic



Next Steps:

- Data integrity and quality
- Balancing measures: not “quicker but sicker”.
- Internal